

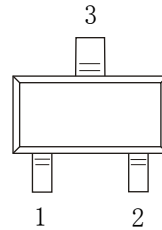
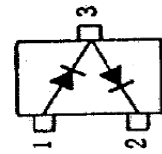


### 1SS362 Switching Diodes

#### ■ Features

- Fast Switching Speed
- Low Forward Voltage
- Fast Reverse Recovery Time
- Small Total Capacitance

Marking C3



SOT-523

#### ■ Absolute Maximum Ratings Ta = 25°C

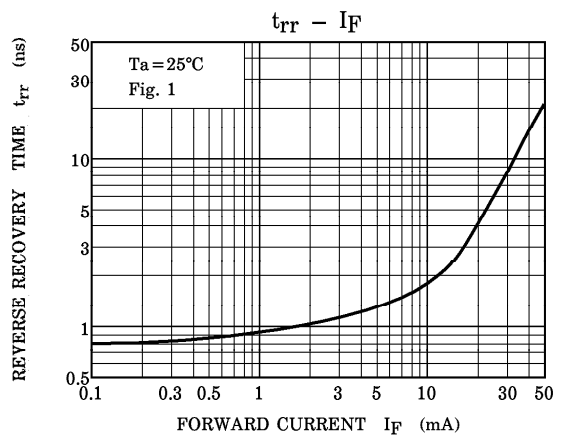
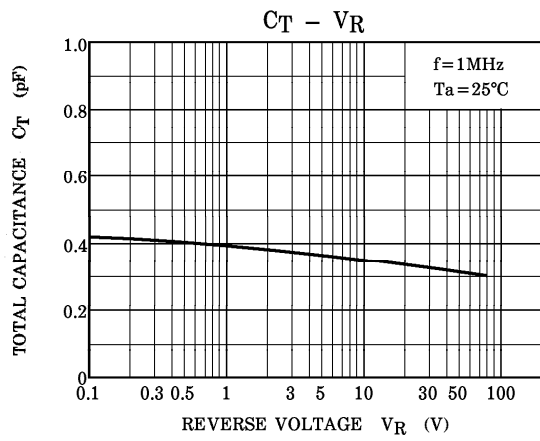
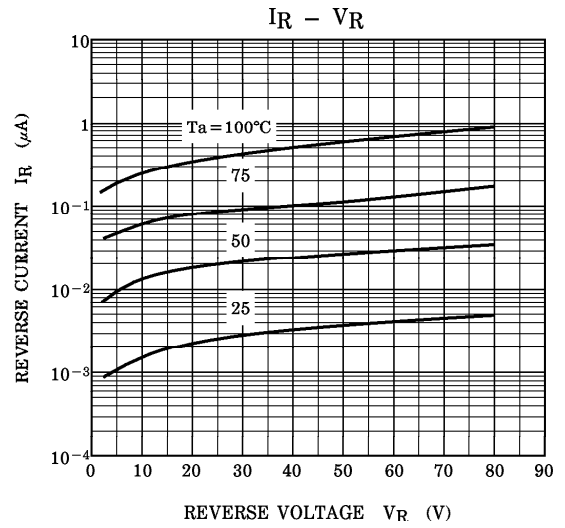
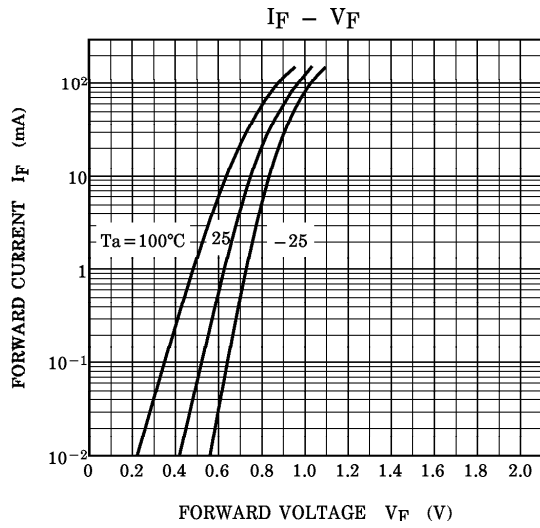
Parameter	Symbol	Rating	Unit
Peak Reverse Voltage	$V_{RM}$	85	V
Reverse Voltage	$V_R$	80	
Average Rectified Output Current	$I_o$	80	mA
Forward Continuous Current	$I_{FM}$	240	
Peak Forward Surge Current @ t=10ms	$I_{FSM}$	1	A
Power Dissipation	$P_d$	100	mW
Junction Temperature	$T_J$	125	°C
Storage Temperature range	$T_{stg}$	-55 to 125	

#### ■ Electrical Characteristics Ta = 25°C

Parameter	Symbol	Test Conditions	Min	Typ	Max	Unit
Reverse breakdown voltage	$V_R$	$I_R = 100\mu A$	80			V
Forward voltage	$V_{F1}$	$I_F = 1mA$		0.63		
	$V_{F2}$	$I_F = 10mA$		0.75		
	$V_{F3}$	$I_F = 100mA$			1.2	
Reverse voltage leakage current	$I_{R1}$	$V_R = 30V$			0.1	uA
	$I_{R2}$	$V_R = 80V$			0.5	
Junction capacitance	$C_j$	$V_R = 0V, f = 1MHz$			3	pF
Reverse recovery time	$t_{rr}$	$I_F = 10mA$			4	ns

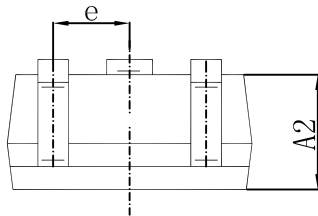
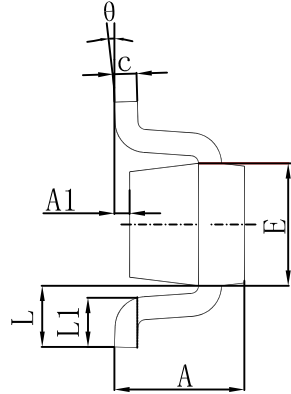
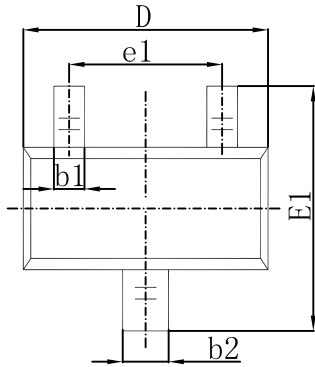


### Typical Characteristics



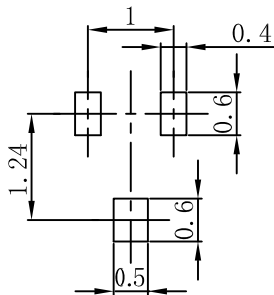


### SOT-523 Package Outline Dimensions



Symbol	Dimensions In Millimeters		Dimensions In Inches	
	Min.	Max.	Min.	Max.
A	0.700	0.900	0.028	0.035
A1	0.000	0.100	0.000	0.004
A2	0.700	0.800	0.028	0.031
b1	0.150	0.250	0.006	0.010
b2	0.250	0.350	0.010	0.014
c	0.100	0.200	0.004	0.008
D	1.500	1.700	0.059	0.067
E	0.700	0.900	0.028	0.035
E1	1.450	1.750	0.057	0.069
e	0.500 TYP.		0.020 TYP.	
e1	0.900	1.100	0.035	0.043
L	0.400 REF.		0.016 REF.	
L1	0.260	0.460	0.010	0.018
θ	0°	8°	0°	8°

### SOT-523 Suggested Pad Layout



- Note:
1. Controlling dimension: in millimeters.
  2. General tolerance:  $\pm 0.05\text{mm}$ .
  3. The pad layout is for reference purposes only.